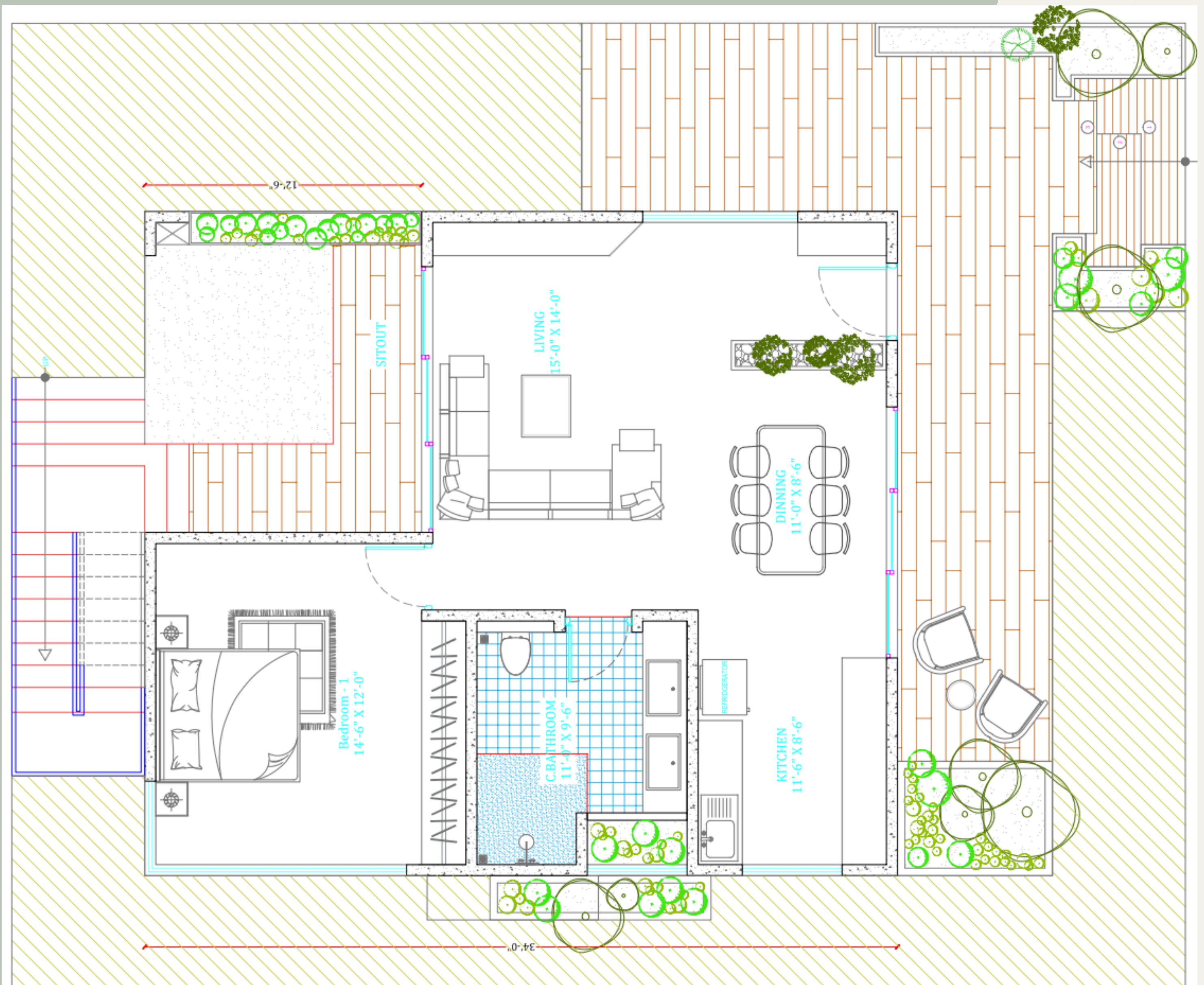




Hide and Teak

Type 2
3 BHK



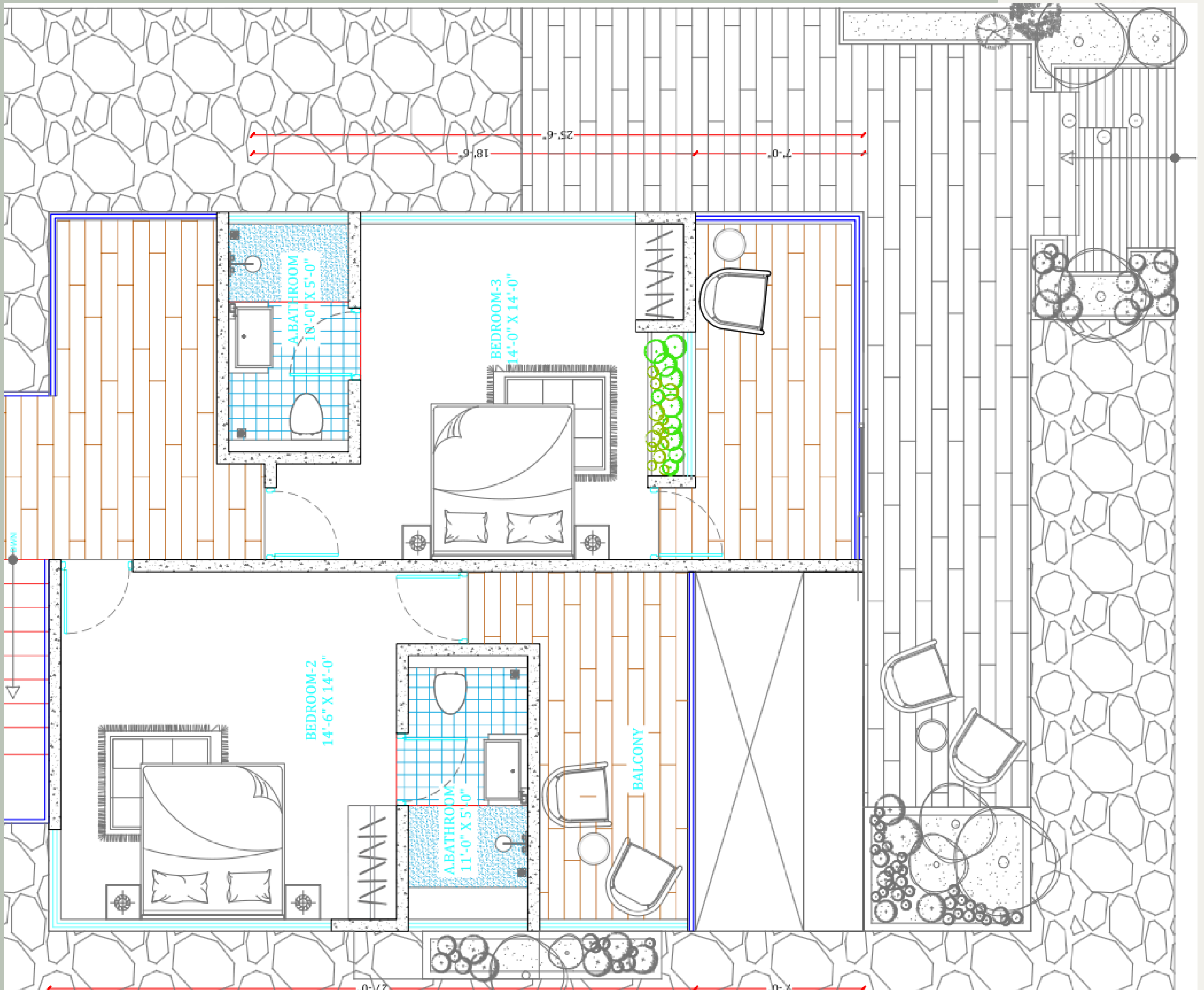
3 BHK

1,700 sft. Super built up
East / North entrance
Ground Floor



Hide and Teak

Type 2
3 BHK



3 BHK

1,700 sft. Super built up
East / North entrance
First Floor



Type 2

Our villas come with

BEDROOMS

King size beds in all rooms

8" mattress in all rooms

Engineered wood wardrobes with interior lighting

Curtain panels and sheers for UPVC windows

Soundproof WPC doors and UPVC windows with 6mm toughened glass

Electrical fittings with Warranty

Choice of flooring: Vitrified or Polished red oxide



LIVING ROOM

Living rooms with large UPVC for maximum light

'L' Shape sofa, coffee table, floor lamp and carpet

60" Android Television / MI projector

Curtain panels and sheers for UPVC windows

Soundproof WPC doors and UPVC windows with 6mm toughened glass

Electrical fittings with Warranty

Choice of flooring: Vitrified or Polished red oxide



Type 2

Our Villas come with

BATHROOMS

Large bathrooms with rain shower and electric geyser
Branded toilet, faucets and shower fittings
Anti-skid tiles in shower and toilet area
Soundproof WPC doors and UPVC windows with 6mm toughened glass
Electrical fittings with Warranty
Granite counter with built-in wash basin



KITCHEN AND BAR

Airy kitchen with large UPVC for maximum light
Engineered wood kitchen with, storage and kitchen island
300L refrigerator, OTG and 4 burner kitchen hob
Electrical fittings with Warranty
Anti-skid floor that matches the interiors



Hide and Teak

Type 2 Construction



CONSTRUCTION

Shell: Mix of forest stones and reinforced concrete blocks for better insulation and power savings (Saves 12% on electricity and maintenance bills)

Roofing: 50mm Puff panels with heavy guage MS angles for better insulation and power savings (Saves 16% on electricity and maintenance bills)

Concrete section painted using high quality interior / exterior paint

12" wide paved drive way with semi-covered car park for 2

Chain link fence with crawlers, 10 fruit trees and 10 teak trees

14" wide gate with Forest stone pillars with smart gate lock

6 CCTV surveillance cameras for every farm villa

100% Back up power (Genset and UPS)

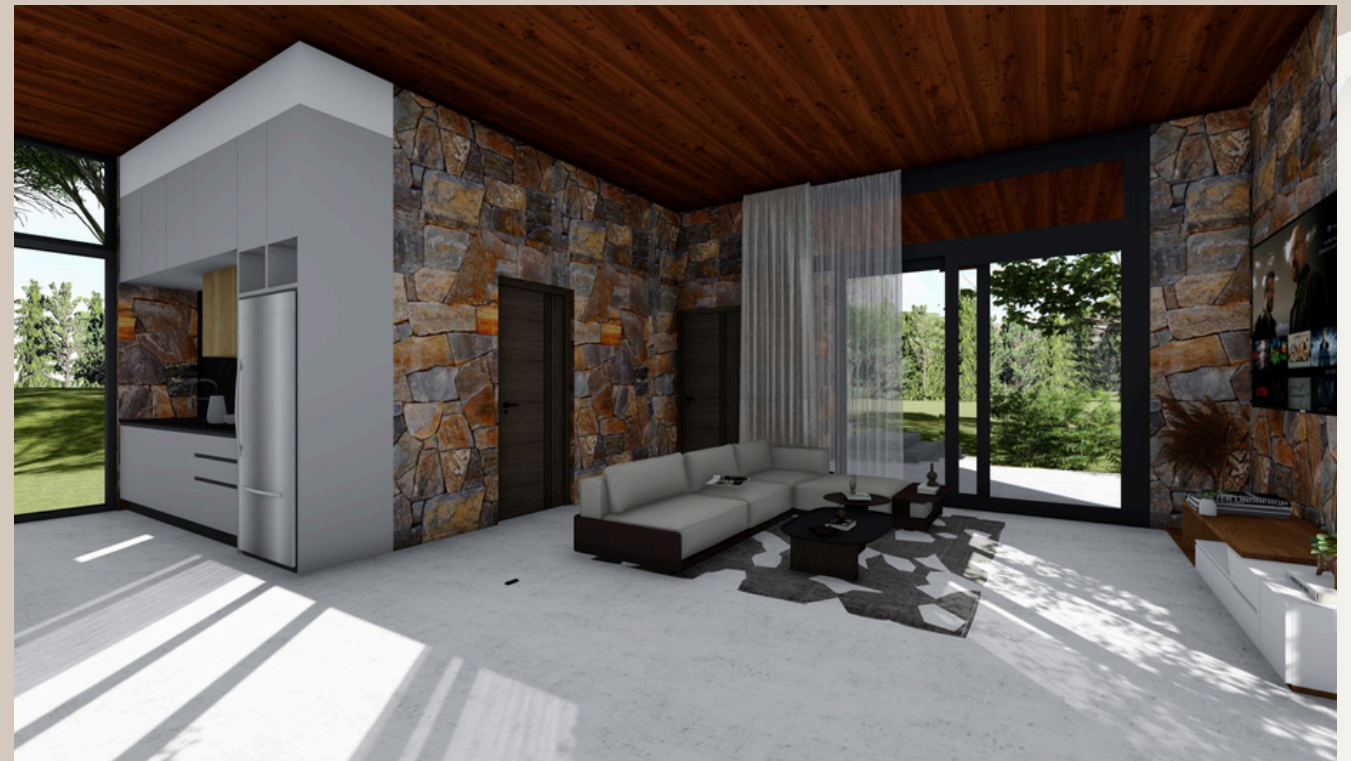


Hide and Teak

Type 2
Images



FRONT ELEVATION



LIVING AND KITCHEN



FRONT SIT OUT



KITCHEN



MASTER BEDROOM



MASTER BEDROOM

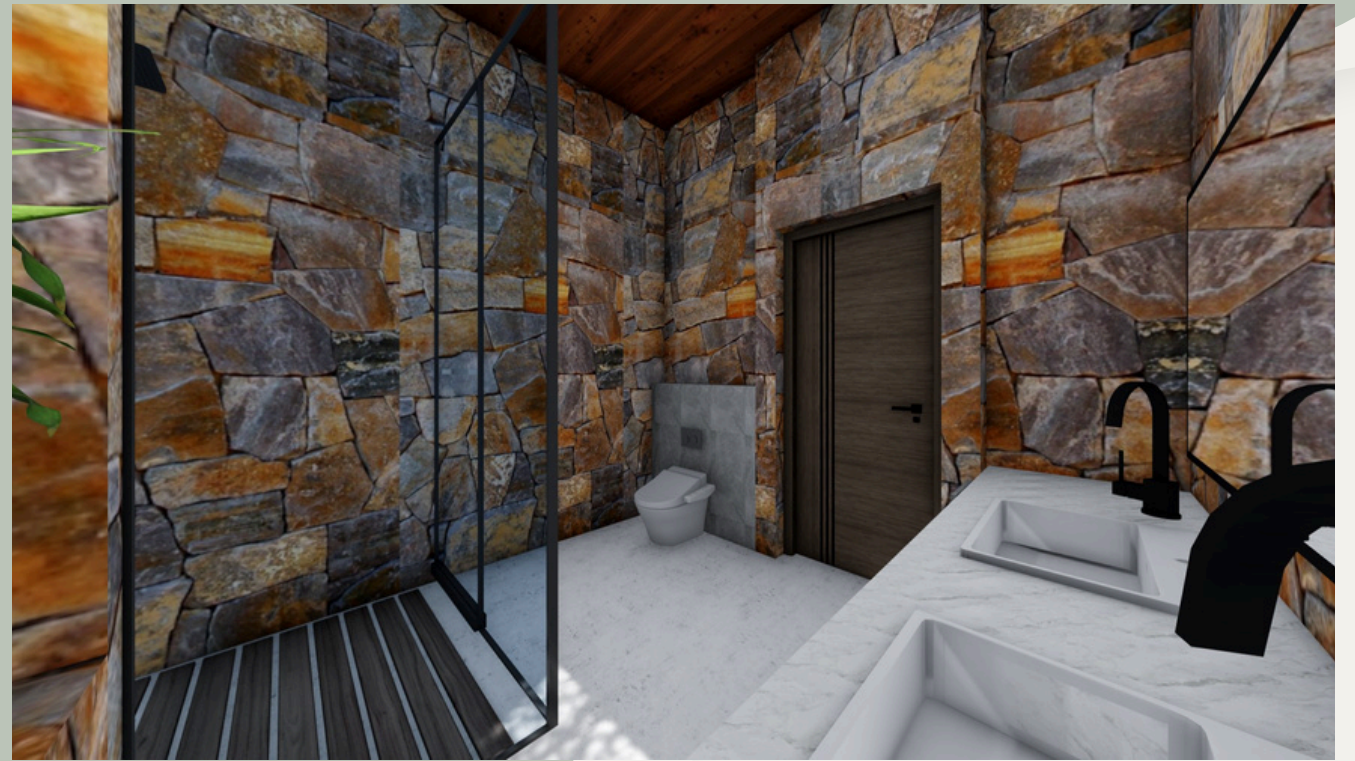


Hide and Teak

Type 1
Images



SIDE ELEVATION



BATHROOM 2



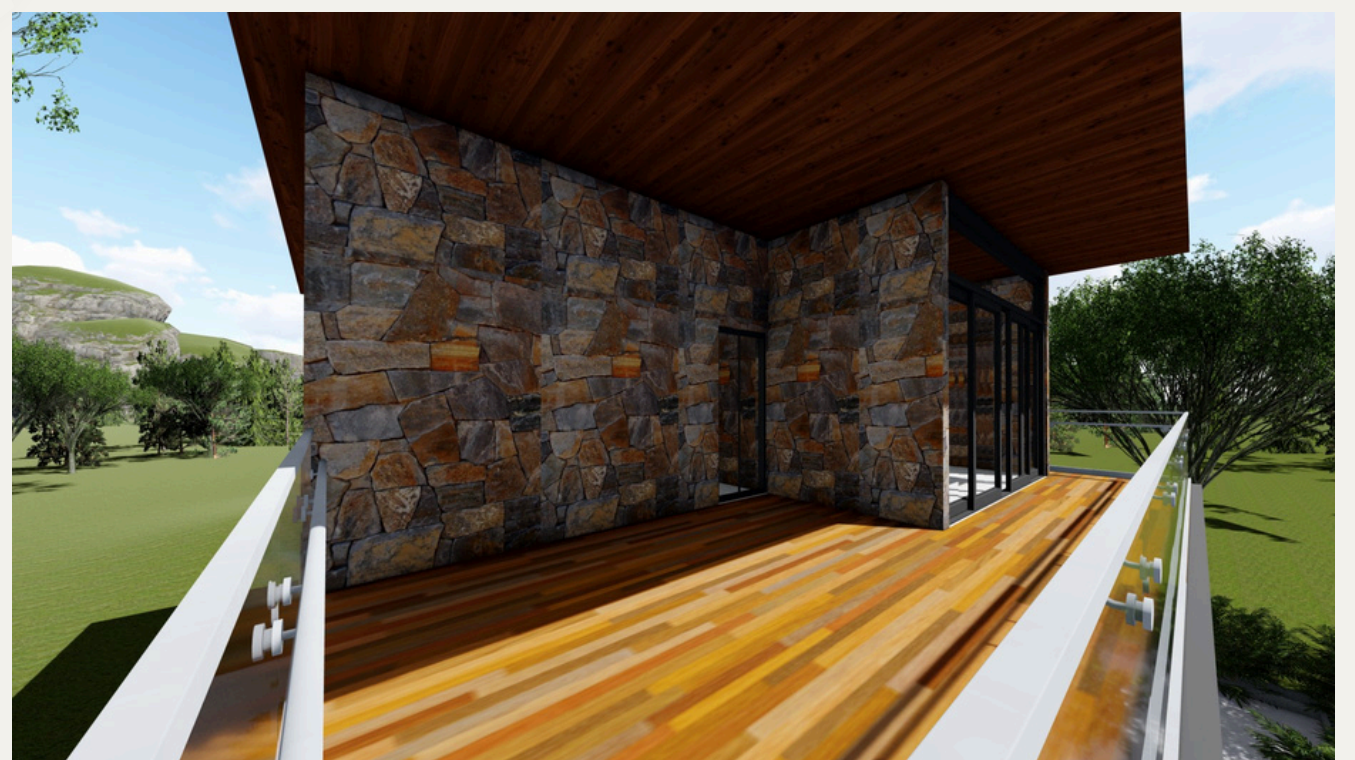
BEDROOM 2. FIRST FLOOR



BEDROOM 3. FIRST FLOOR



LIVING



FIRST FLOOR SIT OUT



PRICING

5,000 sft farm plot with 2 BHK

₹ 89,98,000/-

+ Registration fee

6,000 sft farm plot with 2 BHK

₹ 1,04,98,000/-

+ Registration fee

For more details:

Contact: Avishek Dash on
avishek.dash@hideandteak.in

+91 88072 84802